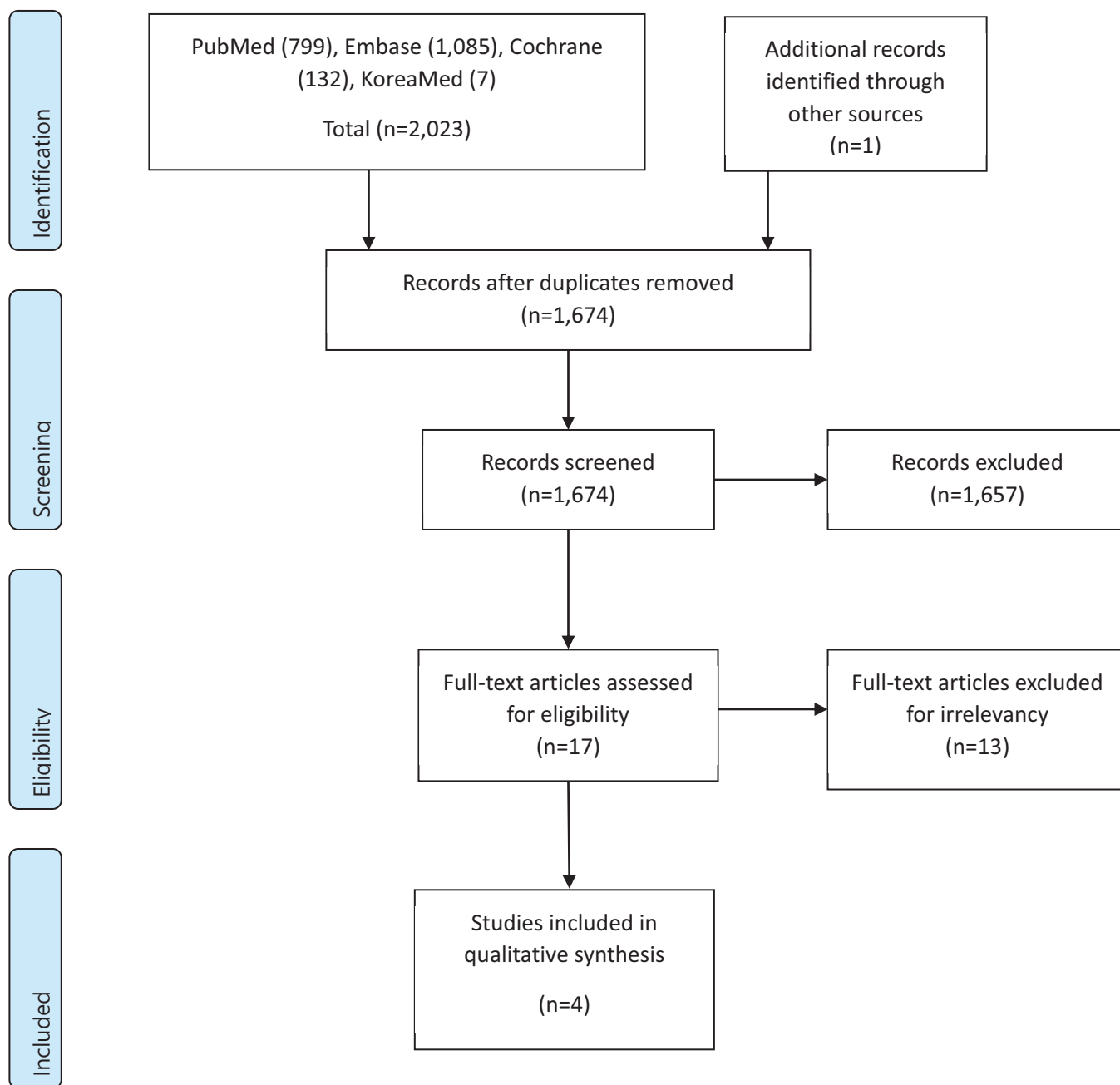
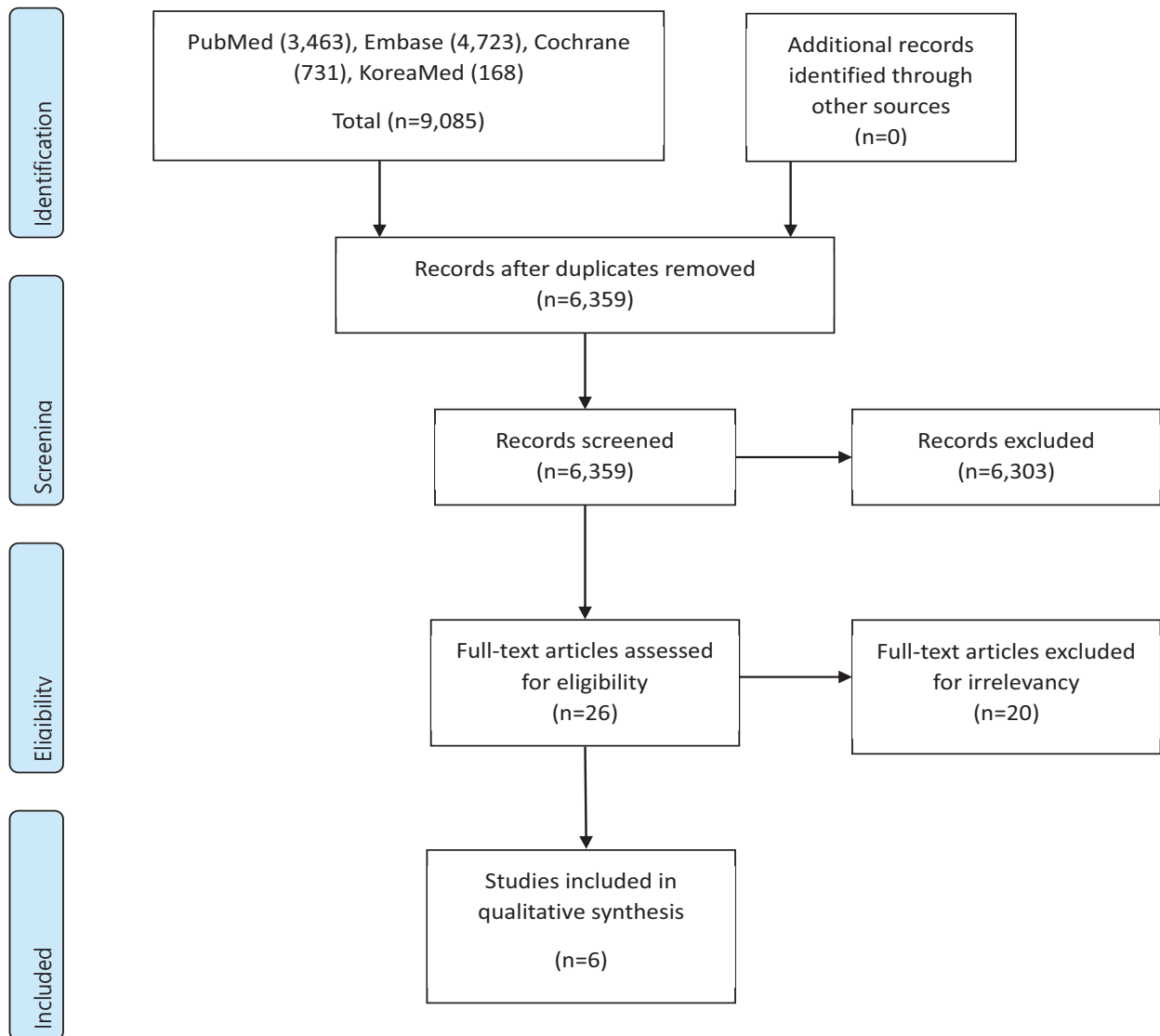


### Supplementary Data 2. PRISMA flow chart

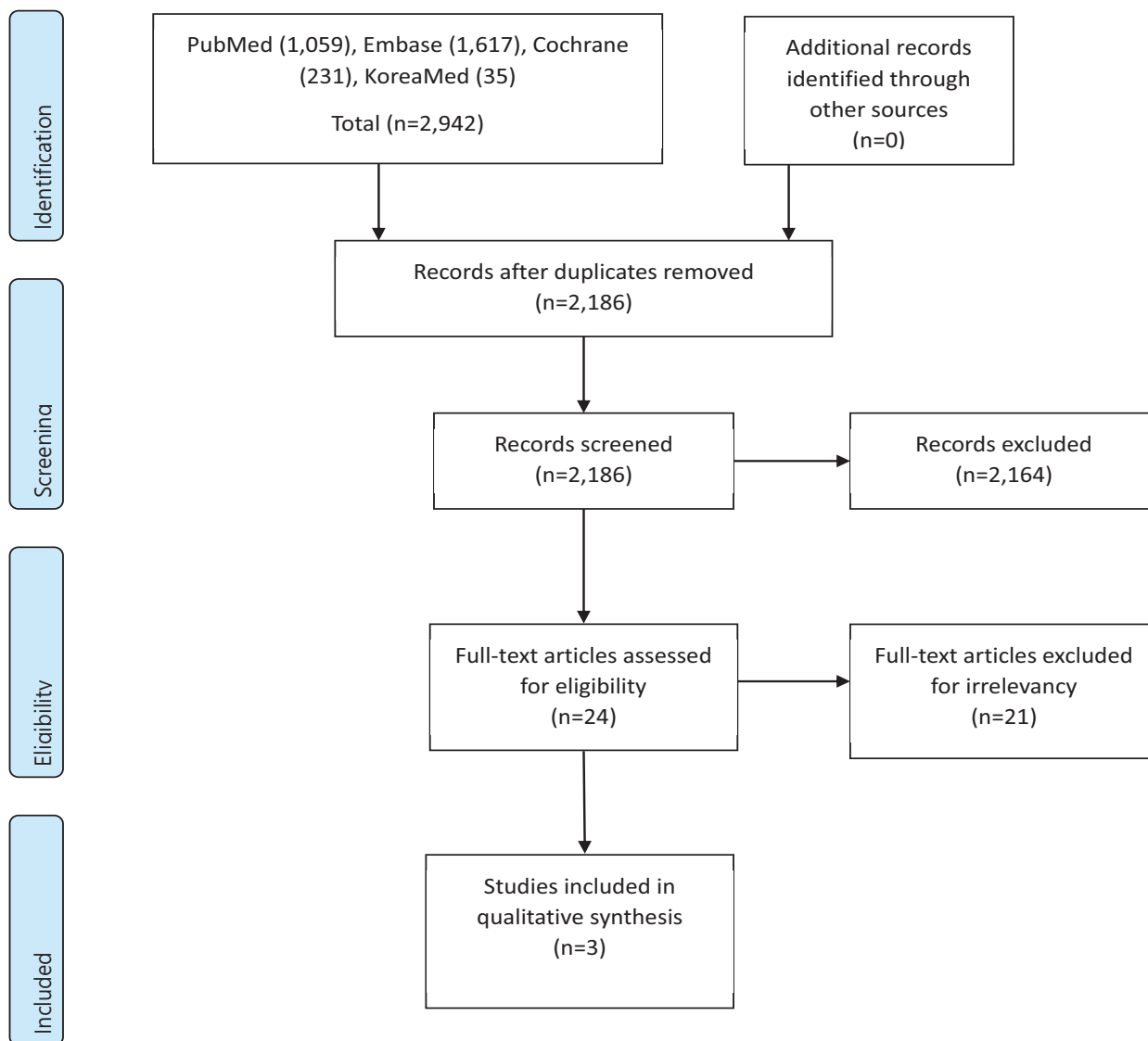
**KQ1.** Does hospital-based multidisciplinary rehabilitation have more clinical effects than usual postoperative treatment in patients with hip fracture surgery?



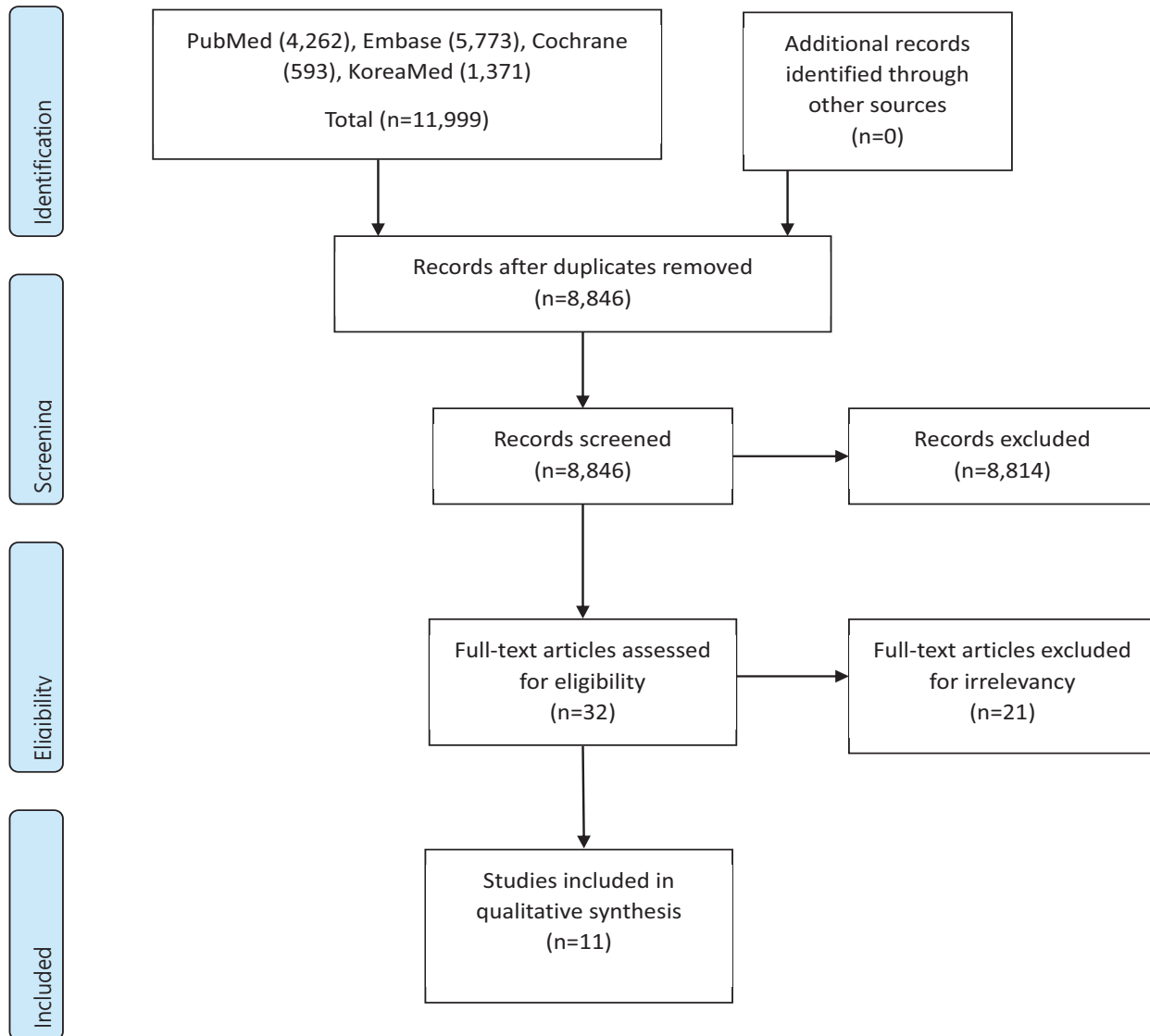
**KQ2.** Is it functionally effective to start rehabilitation early (within 48 h after surgery) after hip fracture surgery?



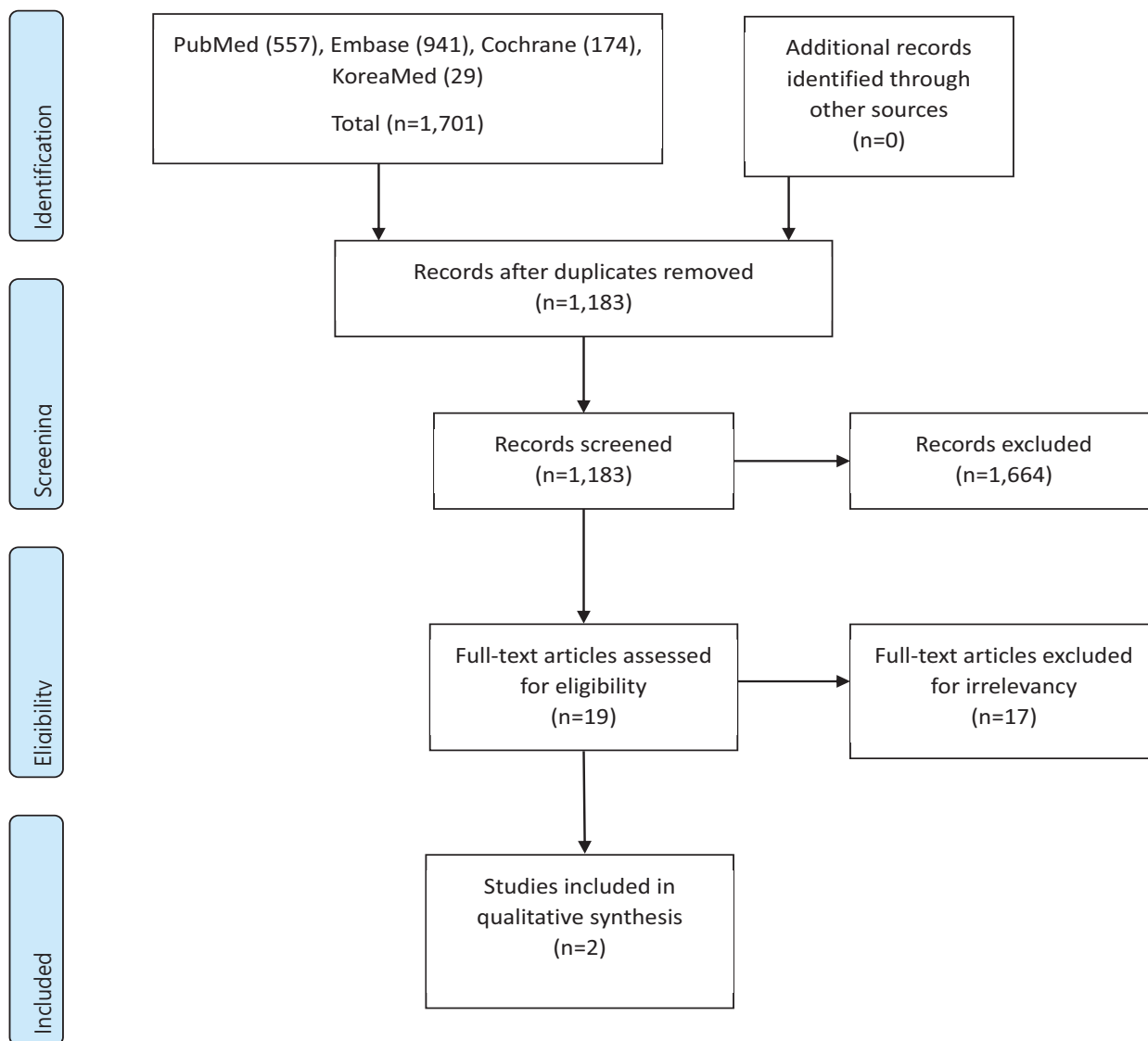
**KQ3.** Is supervised progressive resistance exercise more effective than self-directed exercise in patients with hip fracture surgery?



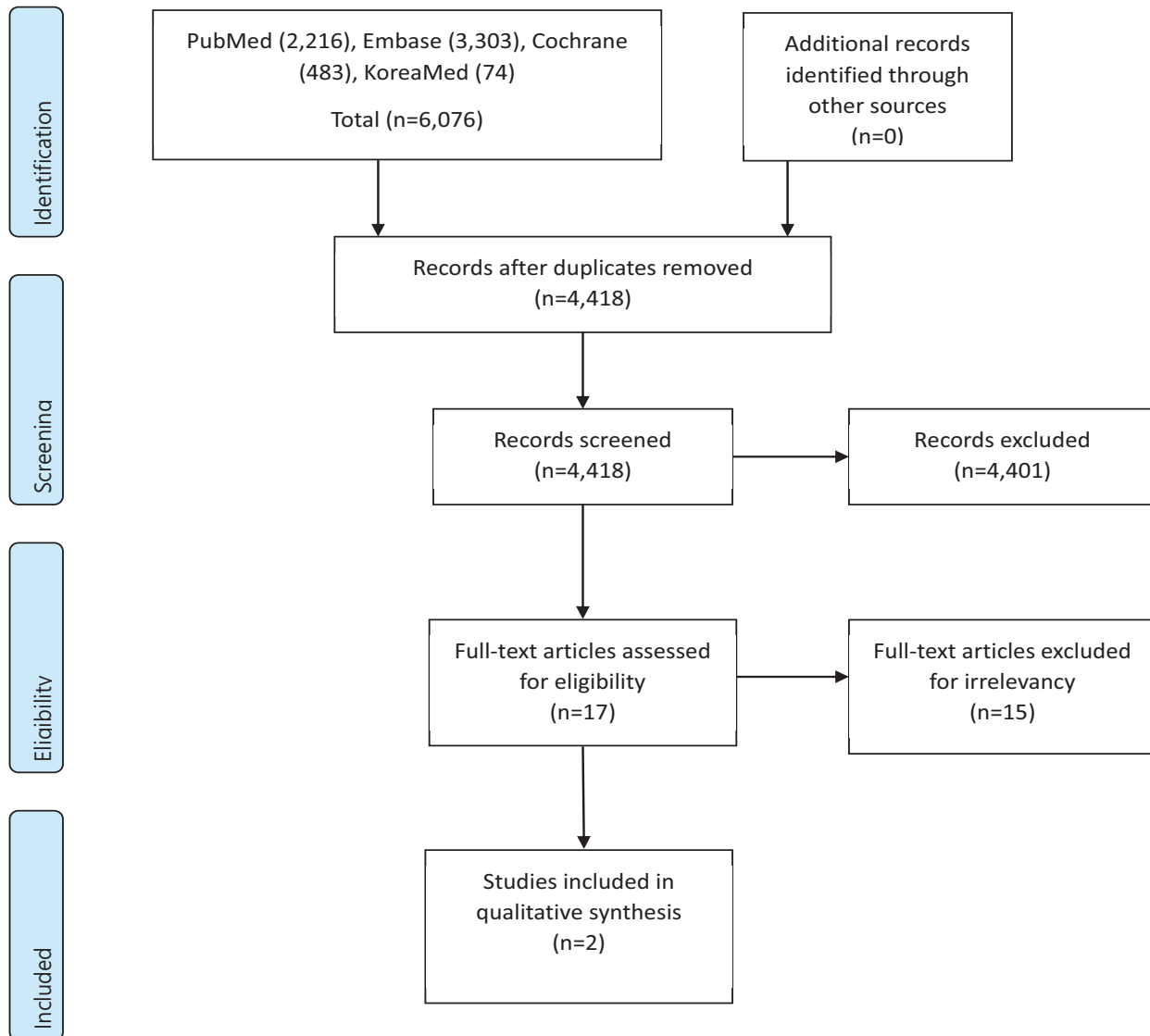
**KQ4. Does weight-bearing exercise affect functional recovery after hip fracture surgery?**



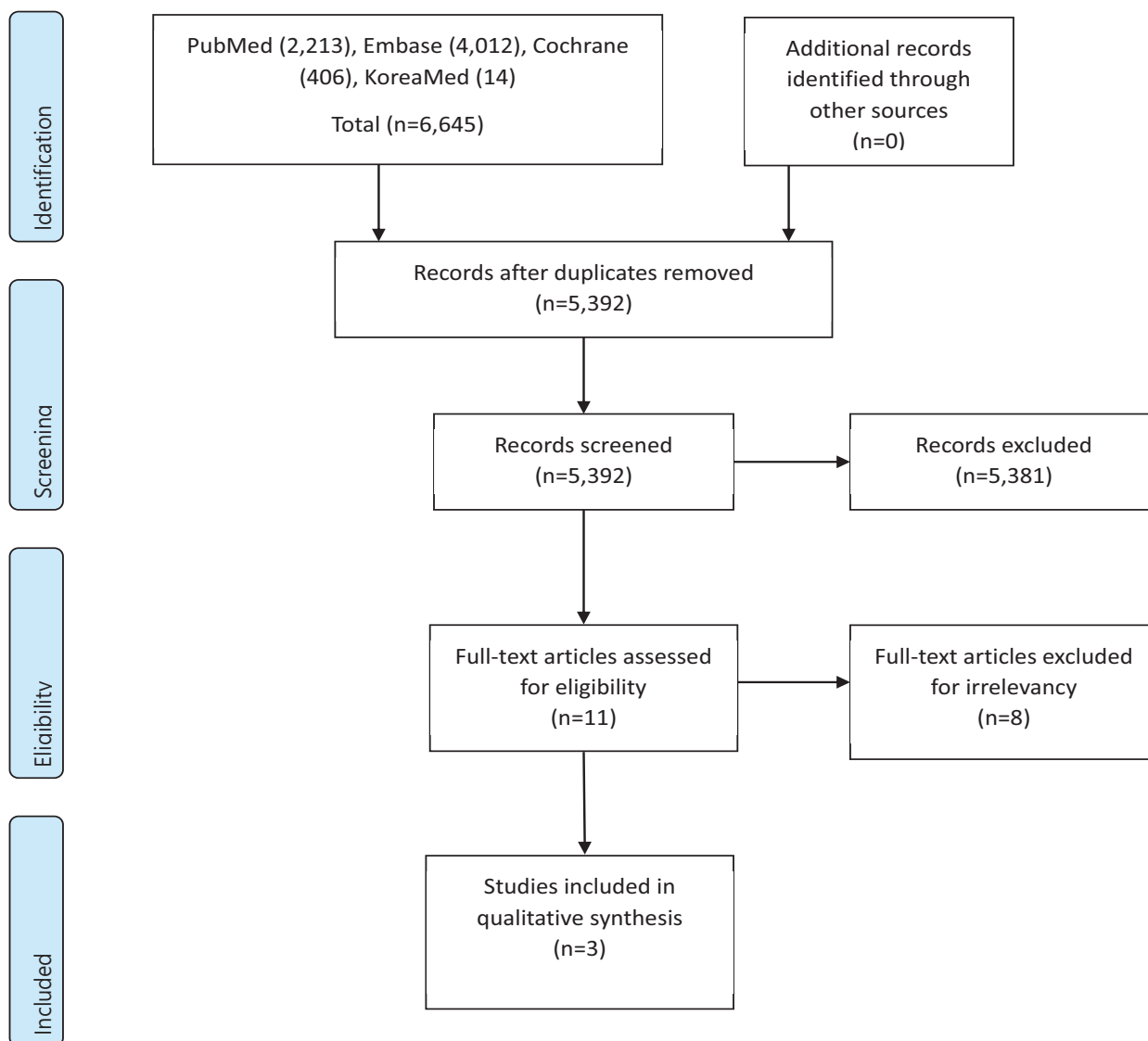
**KQ5.** After hip fracture surgery, is rehabilitation treatment, including balance exercise, more effective than usual exercise?



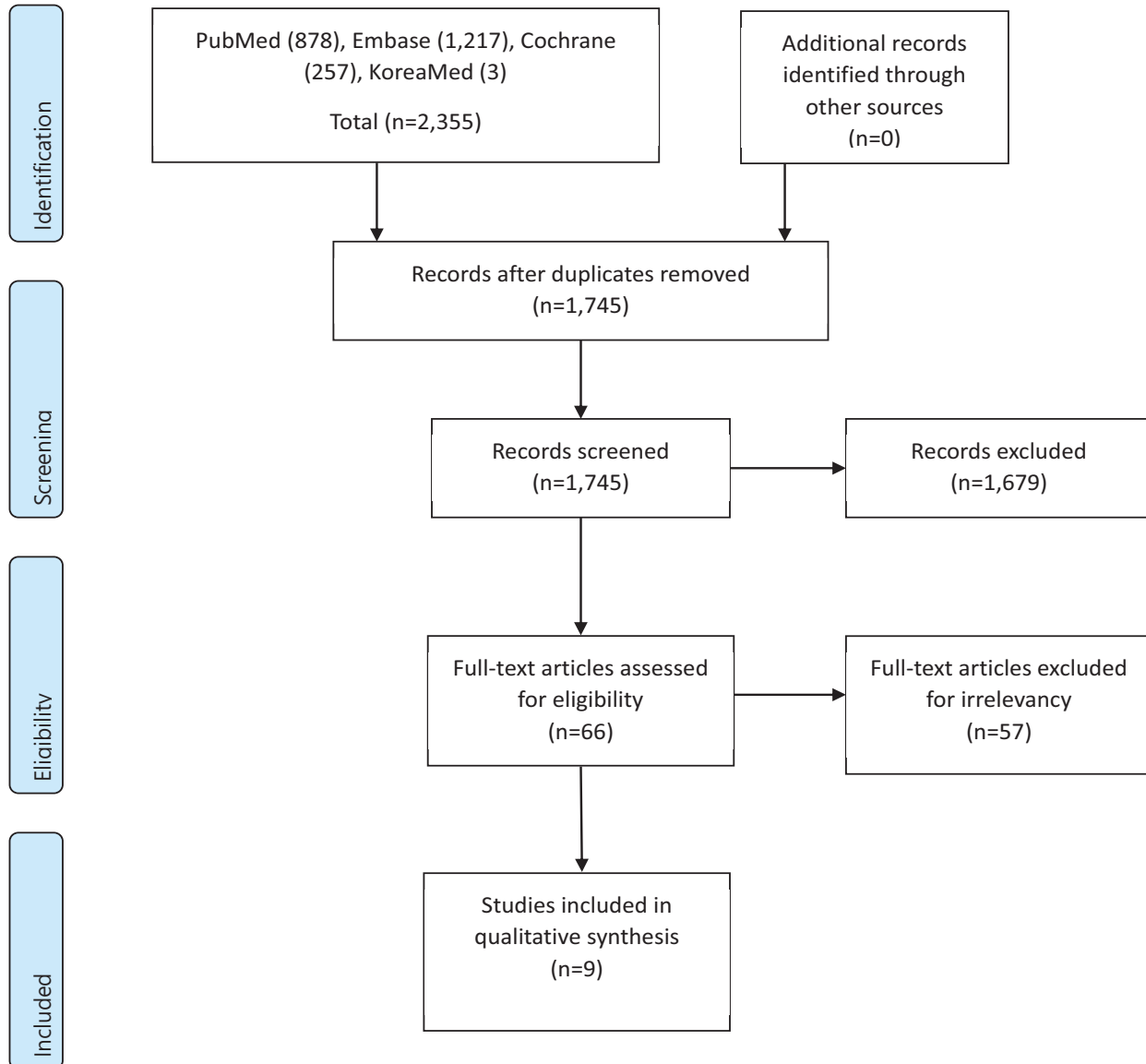
**KQ6.** Should activities of daily living training be included in rehabilitation treatment after hip fracture surgery?



**KQ7. Is multidisciplinary rehabilitation treatment after hip fracture surgery cost-effective?**

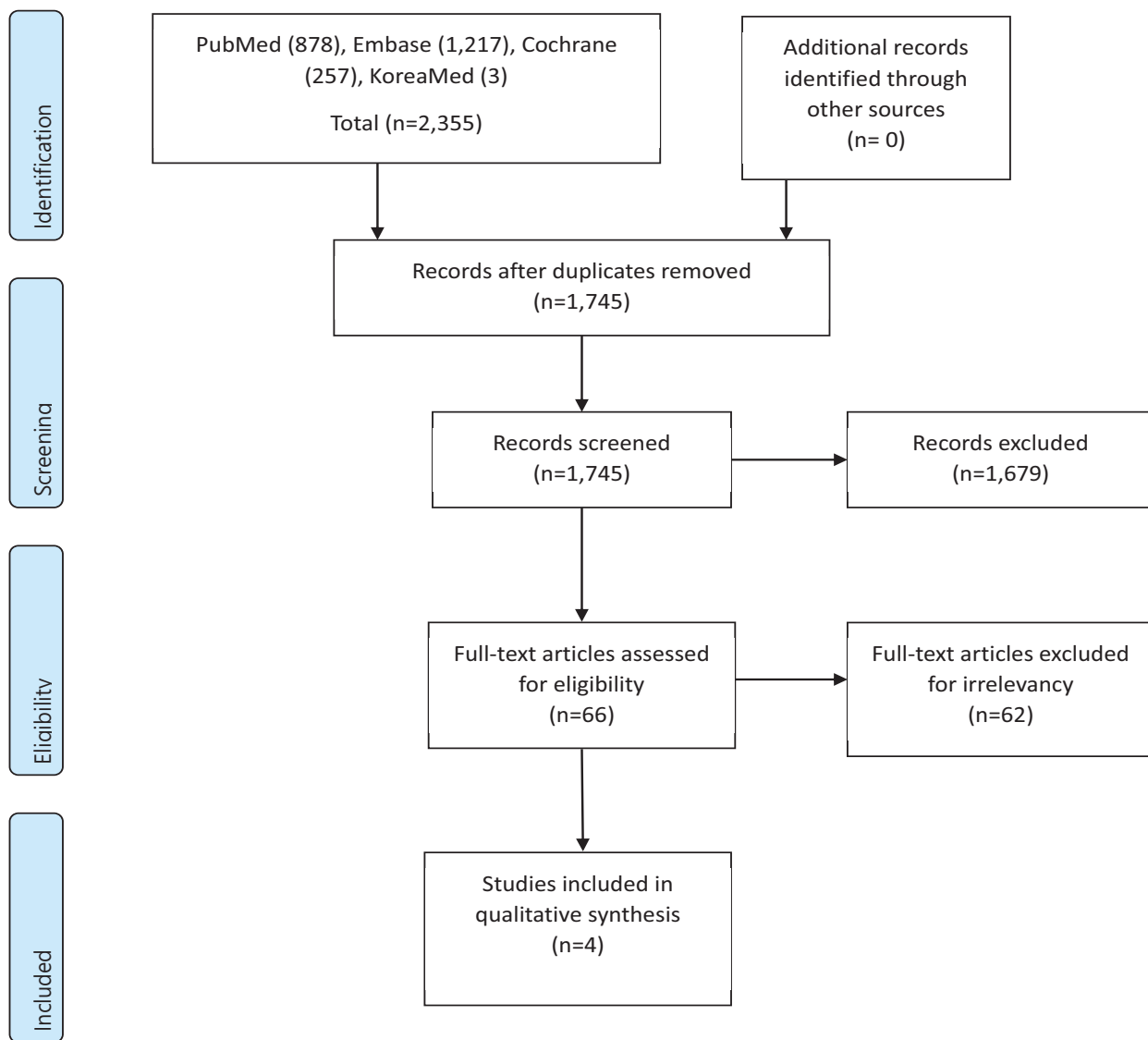


**KQ8.** Is home-based hip fracture rehabilitation effective during the recovery period after hip fracture surgery?

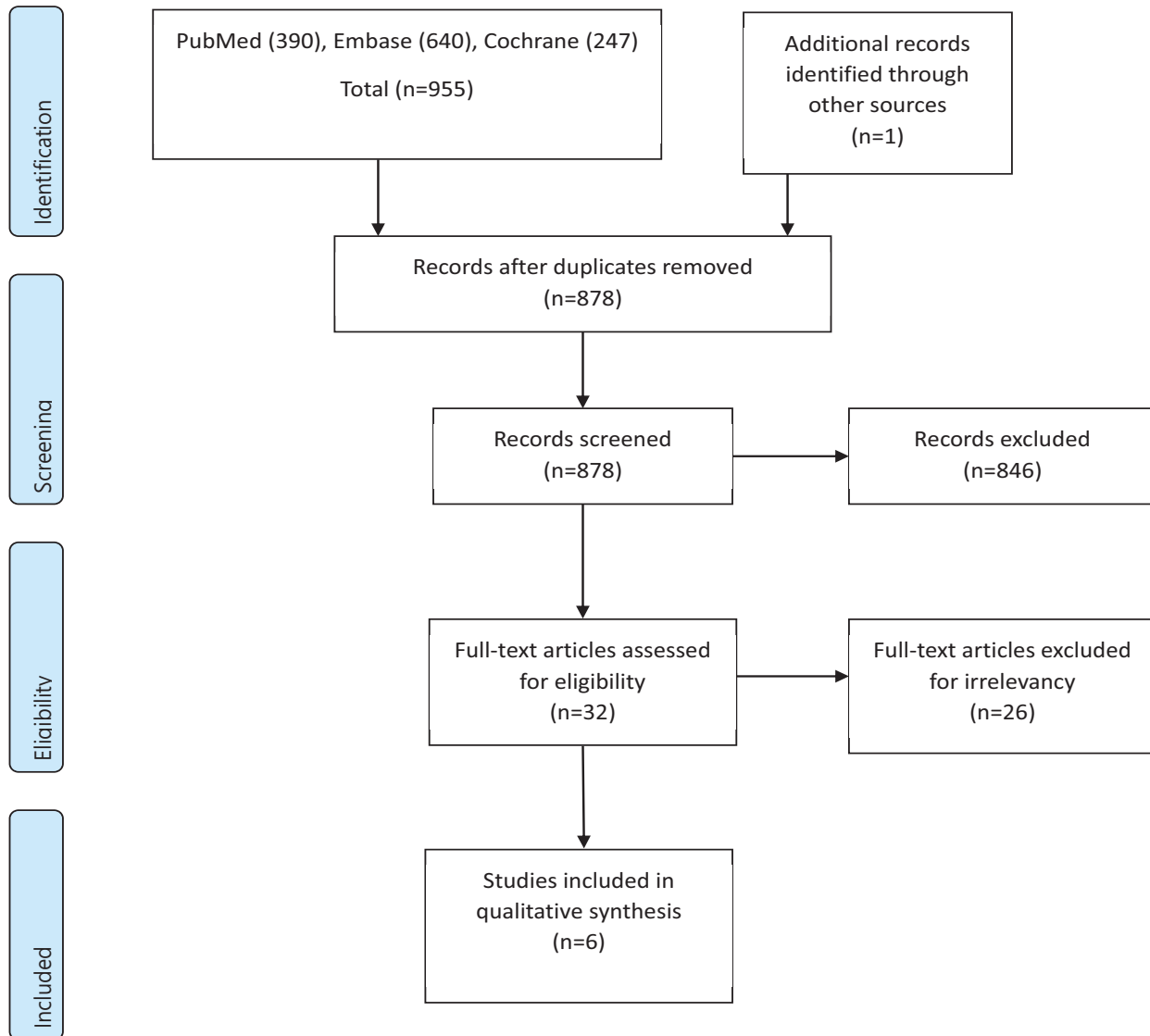




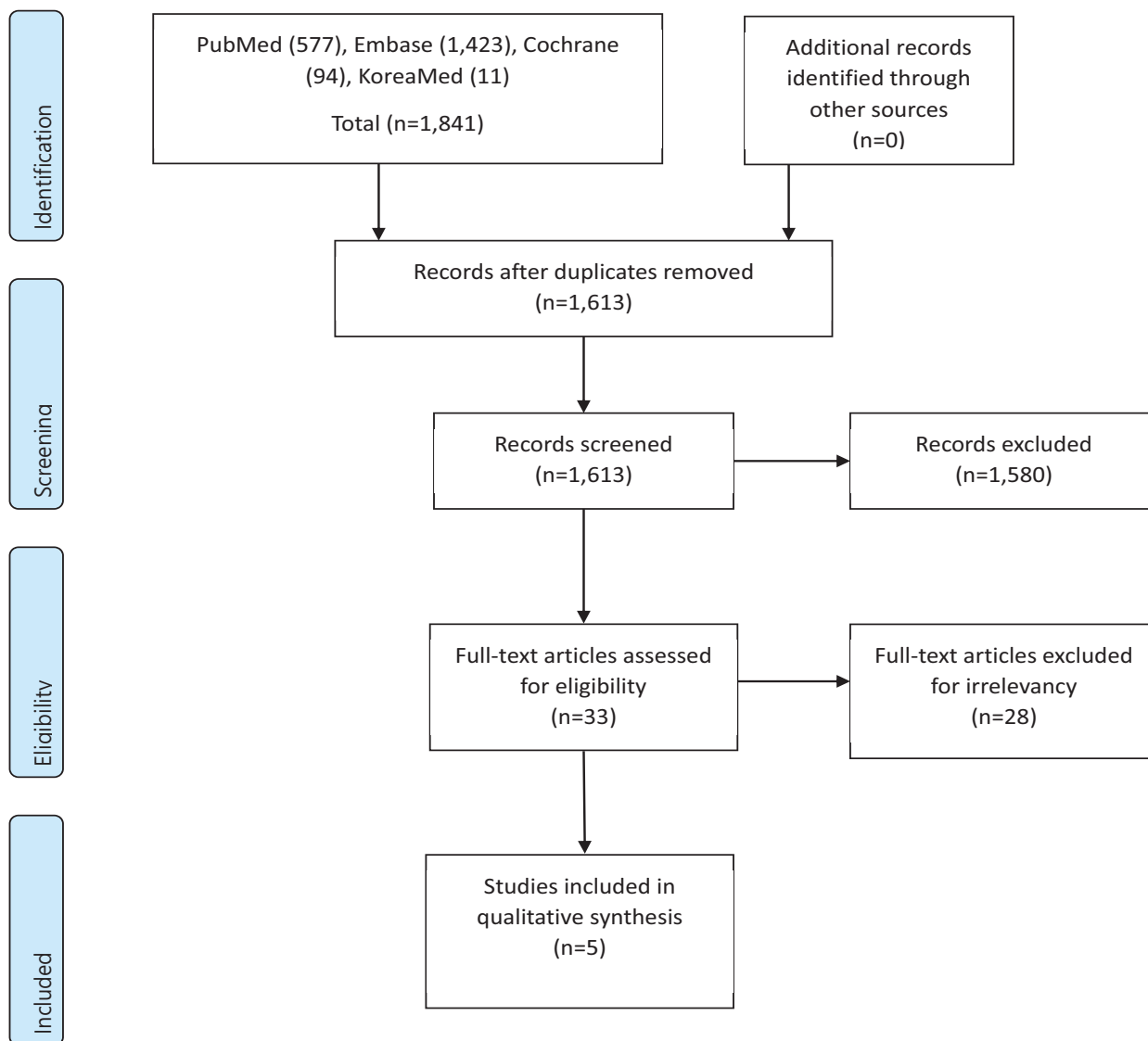
**KQ9.** Is home-based hip fracture rehabilitation effective during the maintenance period after hip fracture surgery?



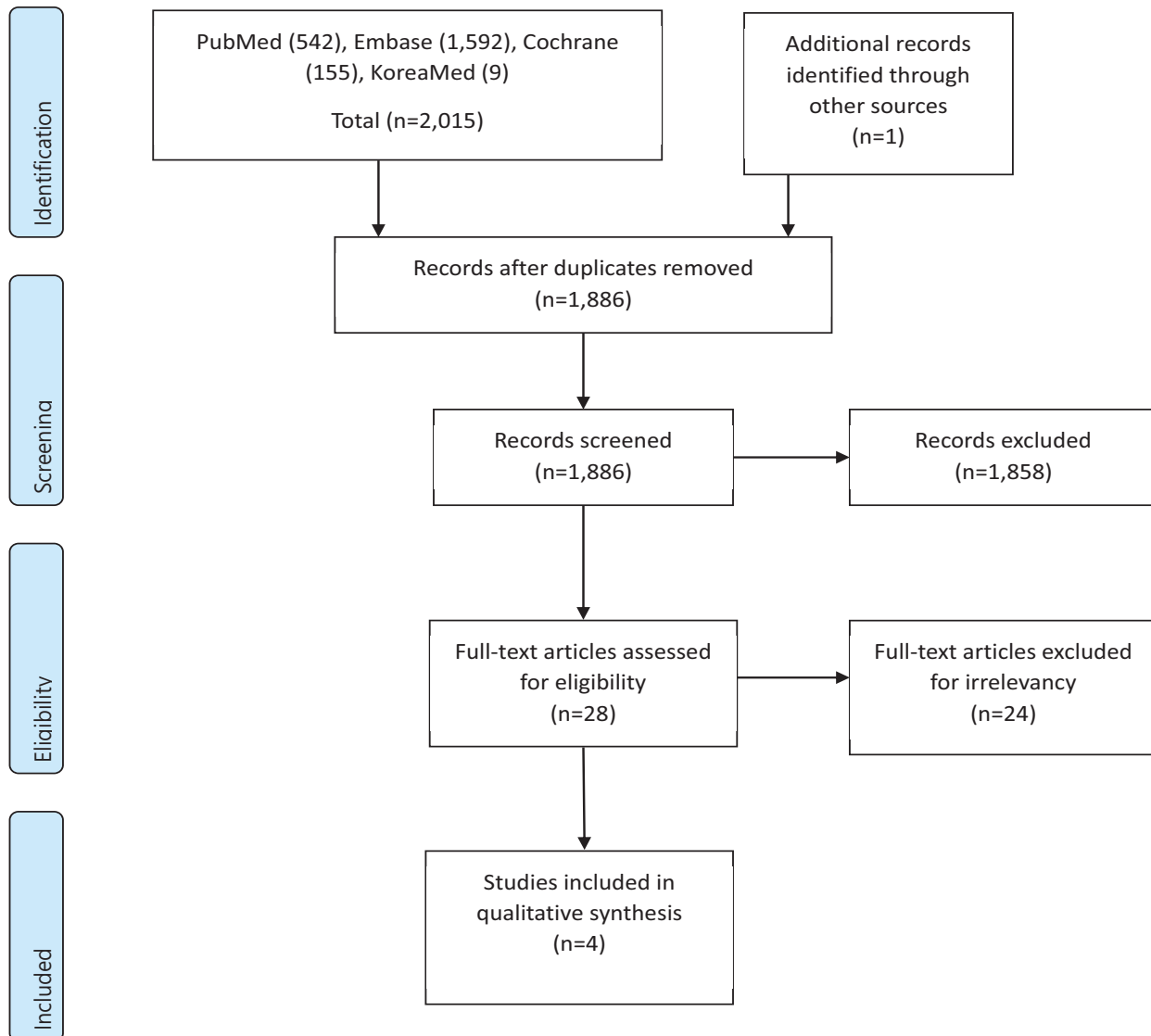
**KQ10.** After hip fracture surgery, can nerve block reduce postoperative pain?



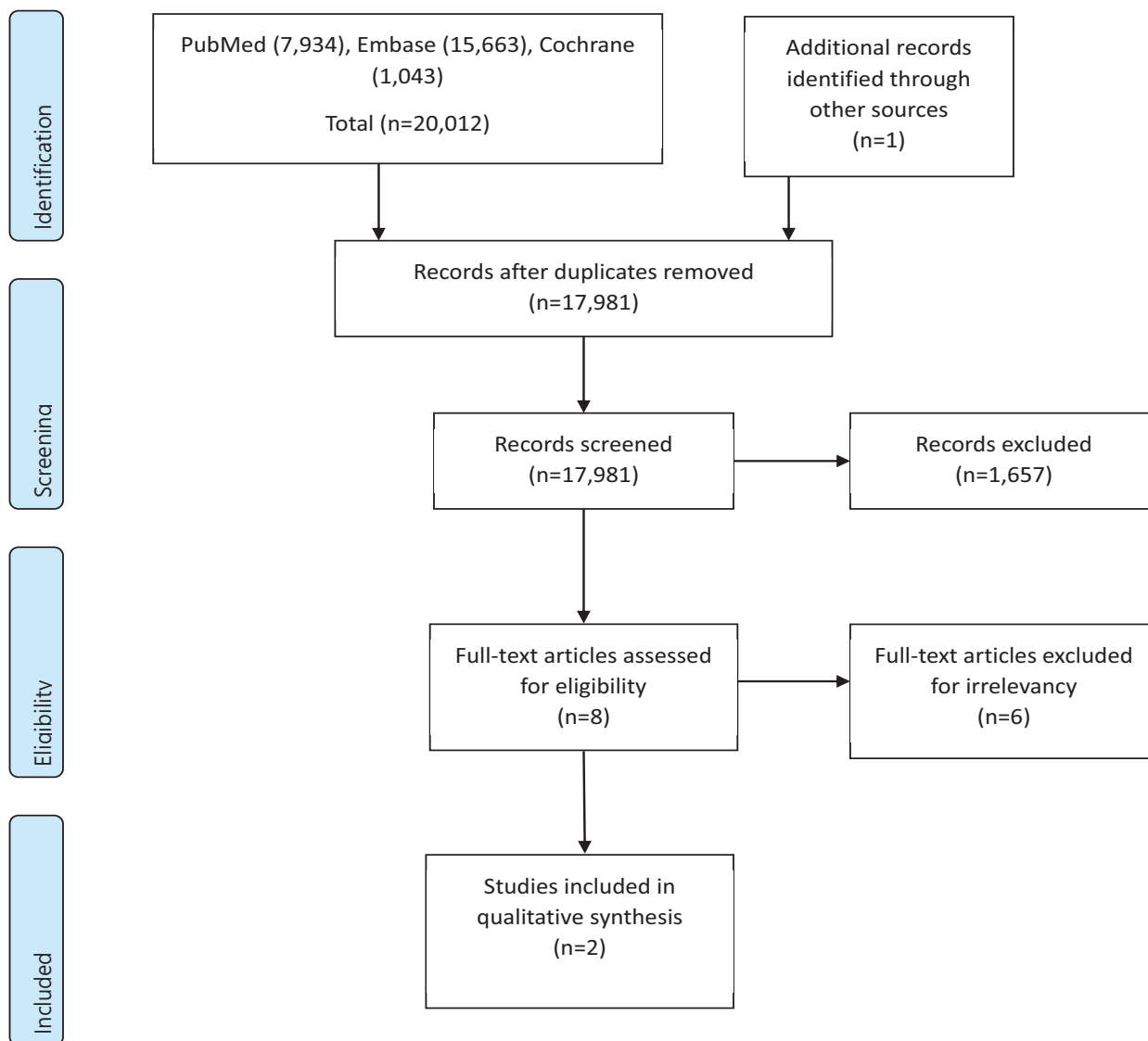
**KQ11.** After hip fracture surgery, is VTE prevention using compression therapy/drug treatment required?



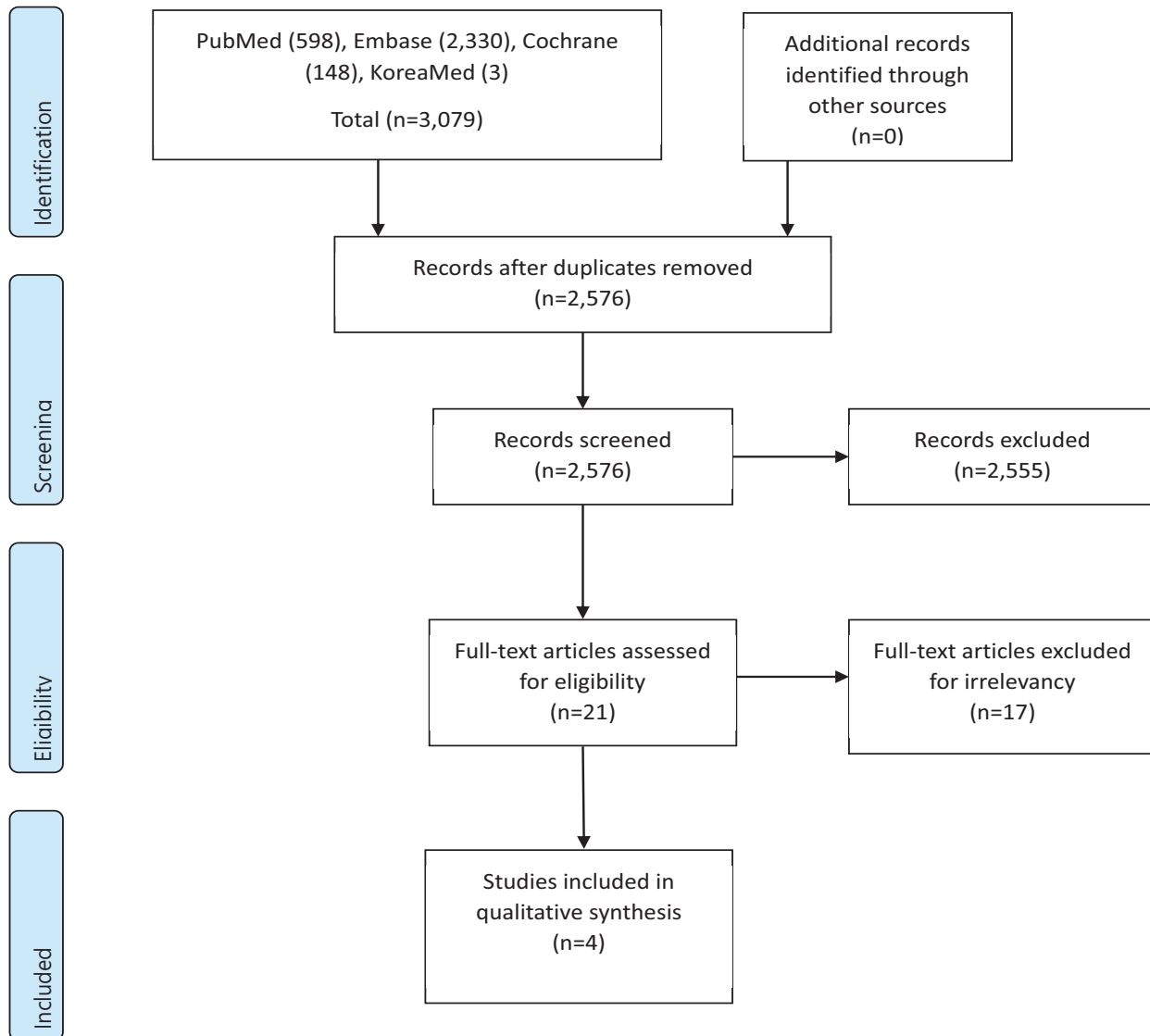
**KQ12.** Should the indwelling catheter be removed early after hip fracture surgery to reduce urinary tract infection?



**KQ13.** Can bisphosphonate administration reduce refracture and mortality after hip fracture surgery?



**KQ14.** After hip fracture surgery, does nutritional evaluation and planning help functional recovery?



**KQ15.** After hip fracture surgery, does high protein supplementation help restore function?

